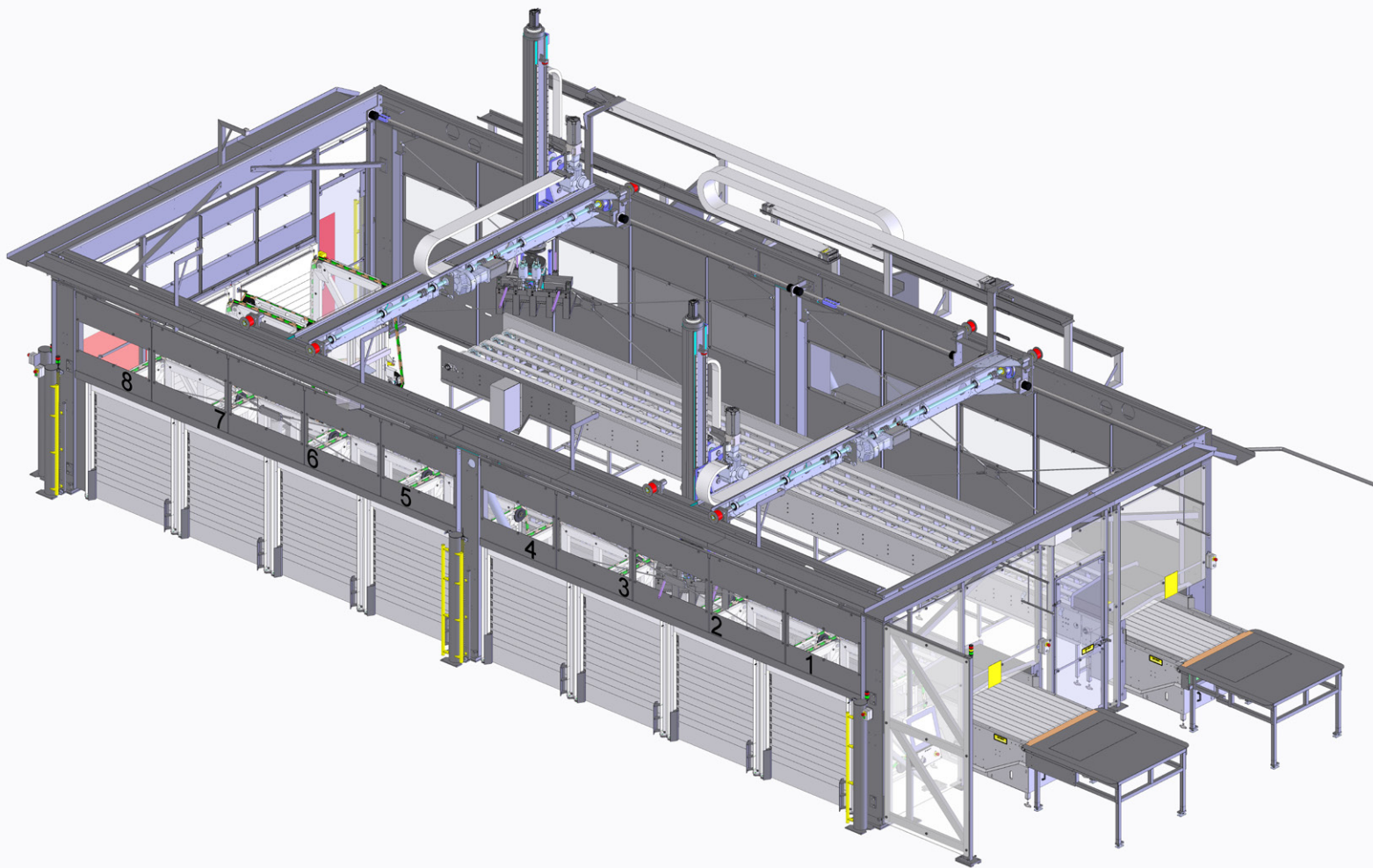


HIDE PALLETISER



Advantages:

- Safe and consistent palletising
- Automatically weighs and palletises beef hides
- Removes the need for manual handling
- Keeps operators away from high levels of forklift traffic, improving site safety
- Integration with factory information systems, improving traceability
- Logging and reporting of plant throughput, quality and the occurrence of defects
- Accurate stock-keeping of palletised hides

Hide Palletiser

After wringing and grading is performed on the hides, they are transported to the Scott system where they are dropped onto folding tables and folded manually. Once folded they enter the Hide Palletiser System and are weighed. Hides are then palletised automatically to one of ten pallet stations based on your preference of weight, grade and/or destination. Once a pallet is full, the door to the pallet station will open, allowing the pallet to be safely removed by forklift, before being replenished with a new pallet.

Specifications:

- Folded hides are palletised automatically to pallets of designated classification (quality, weight grades and/or destination)
- Scalable throughput up to 450+ hides per hour with a unique gantry design
- Scalable design to accommodate multiple pallet form stations (10 pallet former stations in example shown)
- Easy to use hide classification console/station for the selection of quality, grade and/or destination
- Able to integrate into production SCADA systems for automated classification - information tracked with every hide
- Ethernet connected
- Integrated scales for weighing of hides
- Multiple feed lines (two by default)
- Fully guarded to meet required safety standards
- High grade stainless steel to withstand high salt, chemical, pressure and temperature environments



Benefits:

- Payback - Estimated reduction of up to 6 staff per shift, along with health & safety benefits, provides a payback of approximately 2 years
- Improved workplace health & safety and labour replacement (operators no longer manually handling heavy, non-rigid, slippery hides or in high forklift traffic areas)
- Improved traceability and process optimisation through tracking and monitoring:
 - » Processing plant hide throughput
 - » Frequency of faulty and rejected hides and associated production run
 - » Accurate stock accounting
- Improved stability and efficiency from consistently palletised hides
- Gantry system allows for efficient footprint and use of vertical space
- Continuous operation