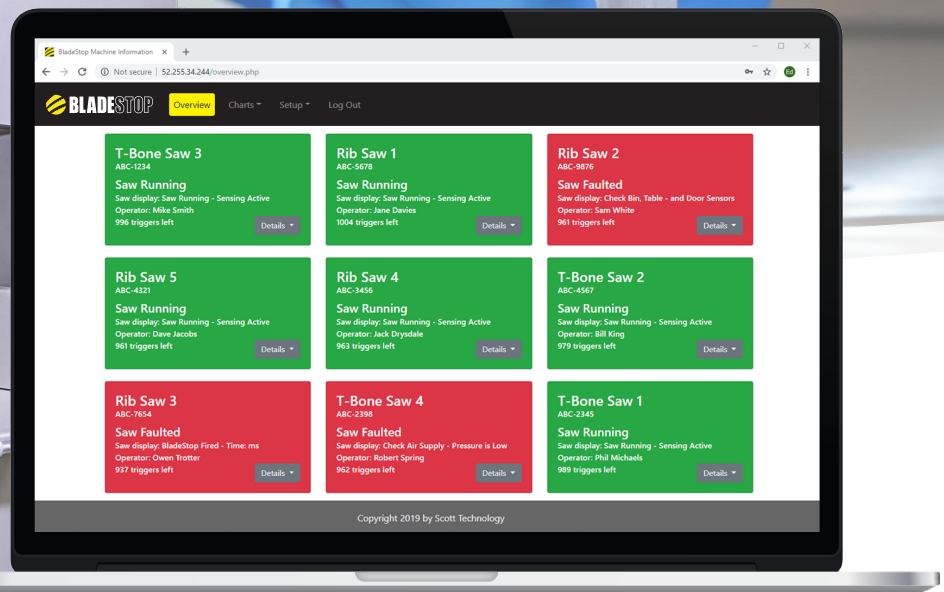




UPGRADE NOW TO BLADESTOP CONNECT FOR REAL TIME DATA



BladeStop bandsaws equipped with BladeStop Connect provides real time and historical data showing productivity and event information. Data is easily accessed from any local intranet connected device.

bladestop.com

bladestop@scottautomation.com



Saw Run Detail

Monday 17 June

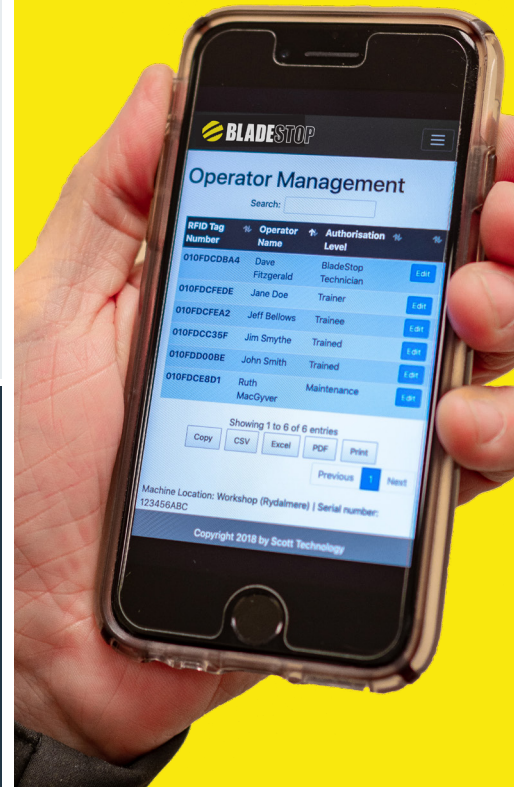


2019-06-17 [Change chart date](#) [Saw detail](#) [Operator data](#)

The BladeStop's unique sensing and fast-stopping capabilities are the difference between having a near miss or an amputation.

"BladeStop just paid for itself"

-KILCOY General Manager



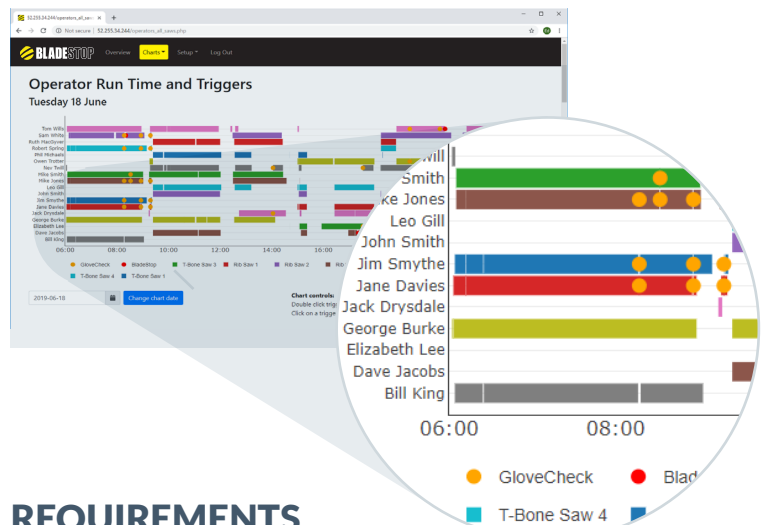
BladeStop Connect
real time & historical data reporting

BLADESTOP CONNECT

BladeStop Connect is available for both previously installed and new BladeStop systems and is configured with unique individual operator logins for detailed shift reporting. A data logger system in each bandsaw captures real time data which can be accessed through a central server.

Data from all connected saws are displayed in a web application and offer critical system information such as:

- Overview of bandsaw status
- Operator hours/access (using RFID)
- BladeStop and/or GloveCheck triggers
- Bandsaw faults, warnings and other events
- Saw utilisation information
- Saw run hours
- Saw maintenance details
- Operation and maintenance manuals



REQUIREMENTS

The BladeStop Connect web application is accessed via a web browser. Once logged in the user will have access to data related to their saws. System requirements include:

- BladeStop bandsaws equipped with BladeStop Connect and RFID reader
- Network connection to BladeStop saws
- Central server - either as dedicated hardware or installing a virtual machine on suitable existing hardware